

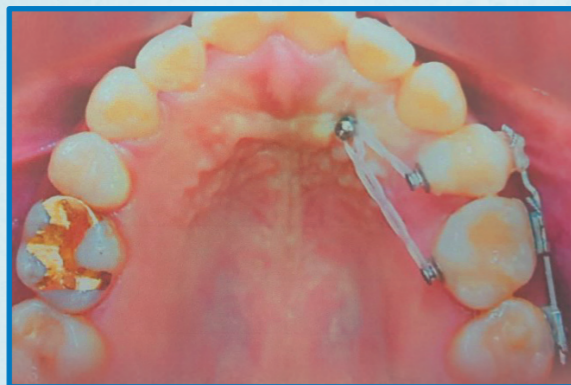
Wireless auto torque

POWER DRIVER

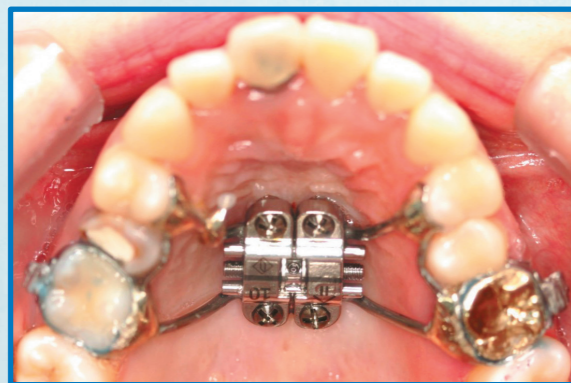
"POWER DRIVER"

MUCH EASIER! MORE CLEAR!

✓ Orthodontic screw



✓ MARPE



✓ Orthodontic Plate



Easy Control



Power ON/OFF,
Torque button



CW/CCW button



Operating button



RPM button

Best Specification

| | |
|--------------------|---|
| Torque value range | 5 ~ 35 Ncm (5 Ncm step) |
| RPM value range | 15 ~ 60 rpm (15 rpm step) |
| Chunk type | Push button chunk(Precise torque control) |
| Operating button | Top, bottom 2 pieces of button |
| Display | Wide backlight LCD display |
| Gear | Swiss Amiet gear |
| Motor | German Faulhaber motor |
| Angle | Only Contra Type |

Wireless auto torque







POWER DRIVER

- ✓ Stability of screw insertion in inaccessible position!
- ✓ Precise torque control, Real-time monitoring
- ✓ Battery safety and torque correction system

Preparation before use

- 1 Press 'power button' over 2 seconds turn on the device.
- 2 Pressing 'R/C(CW/CCW) button' over 2 seconds starts calibration.
- 3 LCD panel shows 'CAL' with beeping sound.
- 4 As calibration starts, motor runs and it automatically calibrates torque value.
- 5 In 3 seconds, calibration will be completed.

How to use

- 1 Press upper side of contra-angle head and connect screw driver shaft.
- 2 Press  power button over 2 seconds.
- 3  Torque value setting,  RPM value setting.
- 4  Checking for CW/CCW,  shows on LCD panel when CCW mode is on.
- 5 Attachment of screw.
- 6 Press  operating button. (Operating mode while pressing the button, stop when the button is released)

Auto stop function
When the torque value is over the setting value
↓
Stop automatically



Disinfection and sterilization

- 1 Cleanse motor handpiece and charging socket with alcohol dampen cotton.
- 2 Be careful not to soak main switch and adaptor. Use alcohol dampen cotton, if it needs to be cleaned.
- 3 Autoclaving is only possible in contra angle head. Please do not autoclave motor handpiece and recharging cradle.

A/S

Warranty period : 1 year (Battery : 6 months)

* Shaft is excluded from warranty as it is consumable.